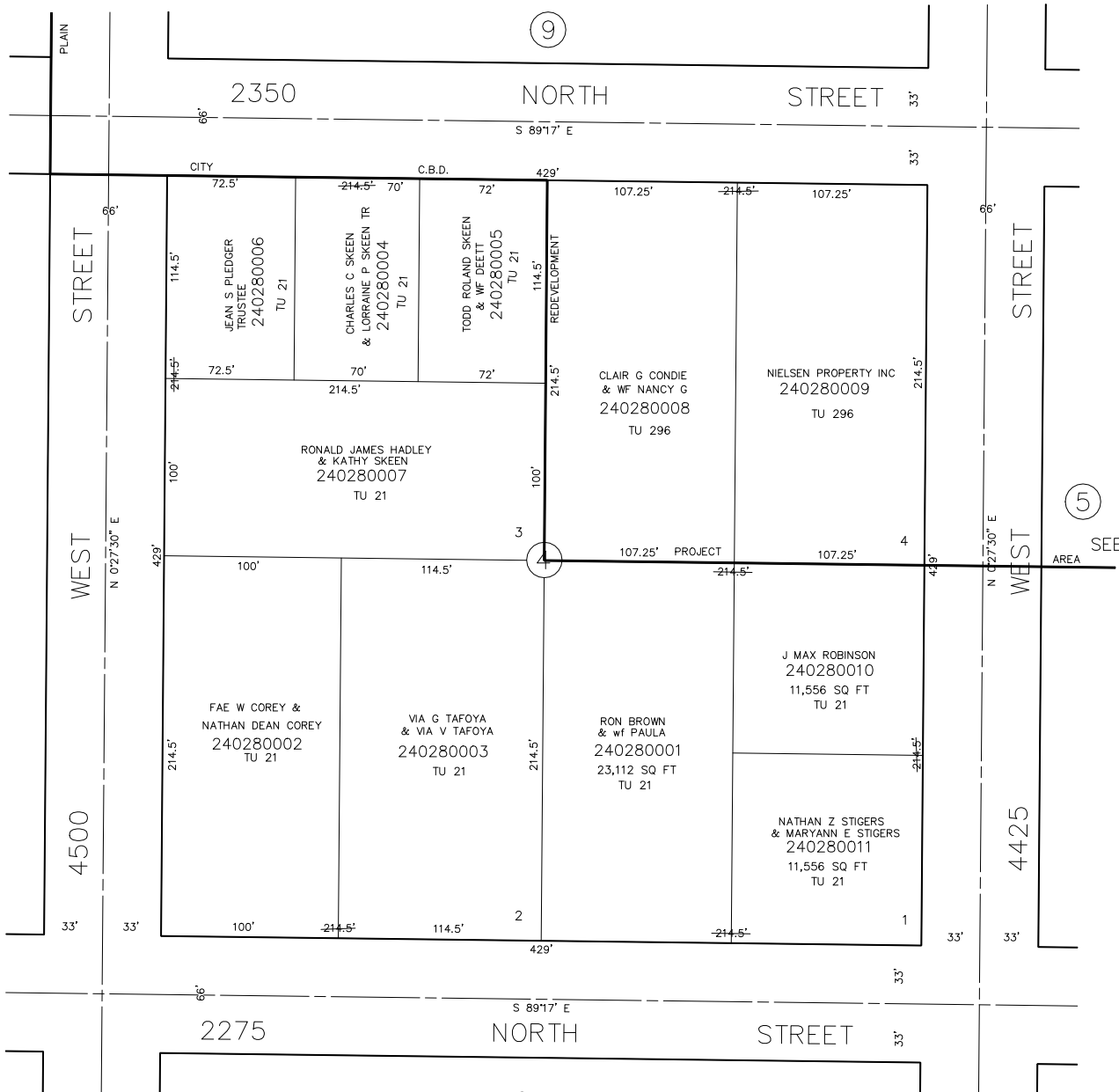


PLAIN CITY
BLOCK 4, PLAT A

TAXING UNIT: 21, 296

SCALE 1" = 50'

SEE PAGE 33



SEE BOOK 19
PAGE 31

SEE PAGE 29

SEE PAGE 27

SEE ORIGINAL DEDICATION
PLAT OF PLAIN CITY IN
BOOK 5, PAGE 80 OF RECORDS.